



BeA Gas Technology

Dynamik CN60-688ES

Concrete Nailer





BeA Nailers are powerful professional tools that perform economically at optimum speed.

The new **CN60-688ES** quickly convinced end users of its benefits as soon as they started to use it! The high capacity magazine and the high capacity battery make it ideal for non stop firing e.g. dry lining applications. Extended winter working - operates at temperatures well below 0° C.



The BeA Fuel Cell

- Specially cleaned propane/ butane
- Fully synthetic oil in fuel
- High precision metering valve
- CFC free
- Quick, easy click-on valve
- Environmentally friendly

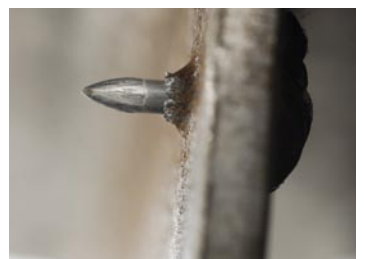
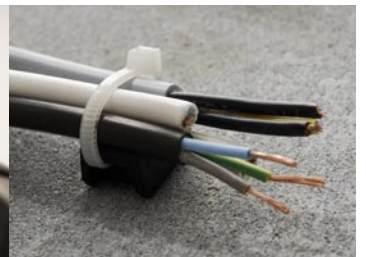


Installation Applications



Applications

- Dry Lining
- Plumbing Applications
- Pre Plumbed Panel Installations
- Electrical Installations
- Modular Build Applications





TOOL CASE

- Dynamik CN60-688ES Concrete Nailer
- Intelligent charger
- Two high capacity batteries
- Adapter sleeve for standard 40 g fuel cell
- Safety glasses
- End user manual
- Allen key



TECHNICAL DATA

Type	CN60-688ES	Dimension L/W/H	453/119/381 mm
Collation type	0° degree	Nail diameter	2.6 mm (0.102")
Magazine type	Rear loader	Nails per strip	10
Magazine capacity	40 nails	Nail lengths	15 - 58 mm (9/16" - 2 1/4")
Max. drives per hour	1,000 nails	Emission sound pressure at the workstation $L_{pA, 1s,d}$	96 dB
Average drives per battery charge	up to 5,000		
Average drives per fuel cell, 40g	1,100 nails		
Mode of actuation	Sequential	This tool conforms to the EN 12100-1-2004, EN 12100-2-2004, EN 792-13-2000 of Directive 98/37/EC.	
Weight (without battery)	3.68 kg (8.1 lbs)		
Battery	0.28 kg (0.6 lbs)		

For more information visit: www.bea-group.com

Distributor Stamp

