

The Vertex
ProClinch™
Series
pneumatic
tools are
designed
to meet your
fastening
needs...



ProClinch™ 4.5

Applies clips supplied on strips. Weighing a mere 4.5 lbs, this hand held tool provides maximum maneuverability while reducing the risk of repetitive motion injuries. Proven design innovations, including composite materials, investment castings and simple pneumatic logic establish this tool as the world wide standard.

ProClinch™ 5.2

Applies clips supplied on rolls. Same lightweight technology as the ProClinch 4.5 adapted for roll format. Typically used with the Complete System for roll fed clips or the more compact spool dispenser frame for remotely activated fixed tool applications. Ideal for use with automated assembly systems.

THE PROCLINCH™ SERIES

Lightweight

A full 35% lighter than the competition to reduce operator fatigue.

User Friendly

Quieter operation and no more morning start-up sluggishness! Easy blade, anvil and pusher spring replacement.

Easy to Handle

Ergonomically designed handle provides for a more comfortable grip.

Reliable

40% fewer components...
40% fewer moving parts...
40% fewer 'O' rings...
Results: Fewer problems!

Use the ProClinch tool for:

- Bedding
- Furniture
- Automotive and van seating
- Animal traps and cages

Options and Accessories

- Blade Jam Release Device utilizes air pressure to release a jammed blade
- ProClinch 5.2 Complete System for roll fed clips
- ProClinch 5.2 'Fish-Mouth' System for clip-ons or soft edge sinuous springs
- Pivoting Anvil Option
- Fixtured Tools for various levels of automation
- Custom Fitting. Vertex engineers will analyze and propose systems for custom applications

VERTEX



FASTENERS INC.

A SUBSIDIARY OF *Leggett & Platt*

3714 JARVIS AVENUE, SKOKIE, IL 60076 USA EMAIL: VERTEX@LEGGETT.COM
PHONE: 847-329-8530 FAX: 847-329-8529

TOOL PARTS

| Part No. | Part Description | Qty. | Part No. | Part Description | Qty. |
|----------|-----------------------|------|----------|------------------------------------|------|
| VC0001 | Cap | 1 | VC0032 | Bearing Bracket | 1 |
| VC0002 | Main Valve Body | 1 | VC0033 | ProClinch™ 4.5 Label | 1 |
| VC0003 | Main Valve Piston | 1 | VC0034 | Warning Label | 1 |
| VC0004 | Spring, Piston | 1 | VC0035 | Shoulder Bolt, 5/16 x 1-1/4 | 4 |
| VC0005 | Cylinder Body | 1 | VC0270 | Valve Assembly with Piston | 1 |
| VC0006 | Piston | 1 | VC0271 | Hanger Assembly | 1 |
| VC0007 | Pin, Cylinder Body | 2 | VH0002 | 1/4-20 Flex Nut | 4 |
| VC0008 | Yoke | 1 | VH0003 | 10-14 x 3/4 Plastite | 7 |
| VC0009 | Roller | 1 | VH0004 | 1/4-20 x 1/2 BHCS | 2 |
| VC0010 | Pin, Link | 2 | VH0005 | O-Ring, Valve Body, 5/8 x 3/4 | 3 |
| VC0011 | Link | 2 | VH0006 | O-Ring, Valve Body, 5/16 x 1/2 90D | 1 |
| VC0012 | Side Plate, R.H. | 1 | VH0007 | O-Ring, Valve Body, 3/8 x 9/16 90D | 1 |
| VC0013 | Side Plate, L.H. | 1 | VH0008 | O-Ring, Valve Piston, 3/8 x 1/2 | 1 |
| VC0014 | Top Plate | 1 | VH0009 | O-Ring, Cap, 2-7/8 x 3 | 1 |
| VC0015 | Trigger | 1 | VH0010 | O-Ring, Piston, 2-3/4 x 3-1/8 | 1 |
| VC0016 | Trigger Valve Lever | 1 | VH0011 | O-Ring, Trigger, 1/8 x 1/4 90D | 1 |
| VC0017 | Trigger Valve Piston | 1 | VH0012 | Spring Pin, 1/8 x 1-1/4 | 1 |
| VC0018 | Trigger Valve Sleeve | 1 | VH0013 | Spring Pin, 5/32 x 1 | 1 |
| VC0019 | Front Plate | 1 | VH0014 | Dowel Pin, 1/8 x 7/8 | 2 |
| VC0023 | Spring, Trigger Valve | 1 | VH0015 | Bearing, Hanger | 1 |
| VC0024 | Spring, Pusher | 1 | VH0016 | 1/4-20 x 1 BHCS | 1 |
| VC0025 | Pusher Latch | 1 | VH0018 | 1/4-20 x 3/8 Flange Head | 1 |
| VC0026 | Spring, Pusher Latch | 1 | VH0019 | Retainer Clip | 1 |
| VC0030 | Pin, Hanger | 1 | VH0101 | Dowel Pin, 1/8 x 3/4 | 1 |
| VC0031 | Hanger | 1 | | | |

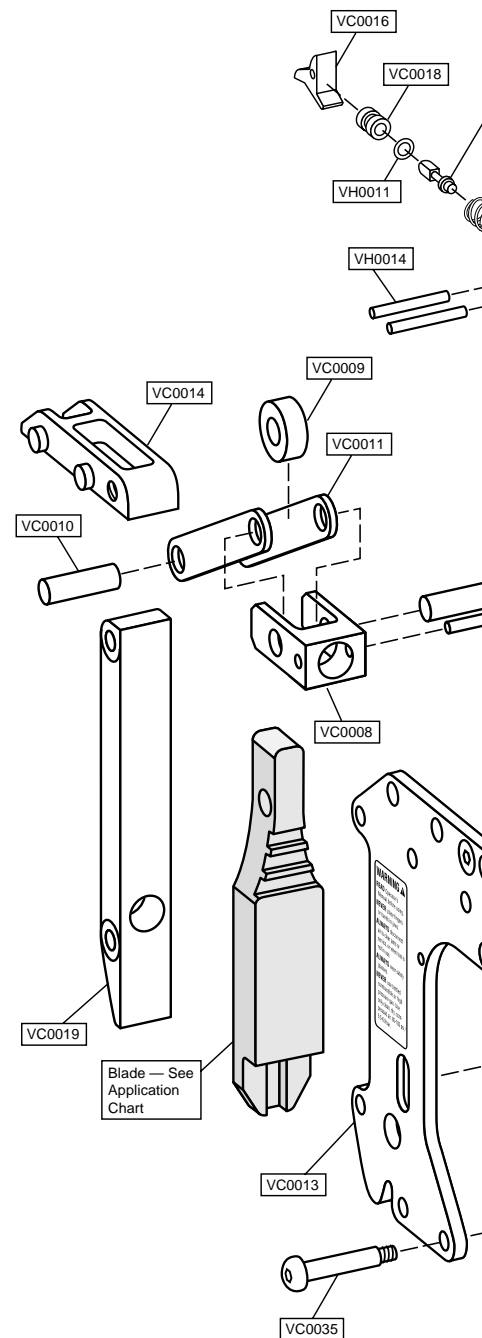
SAFETY INSTRUCTIONS

1. Operators should ALWAYS wear safety glasses while operating, maintaining or repairing a tool.
2. NEVER point the tool toward yourself or anyone else.
3. ALWAYS disconnect the air supply when the tool is not in use, when mechanically clearing a jam, or when performing maintenance.
4. NEVER place hands or fingers near the blade and anvil area when operating the tool or when connecting the air supply to the tool.

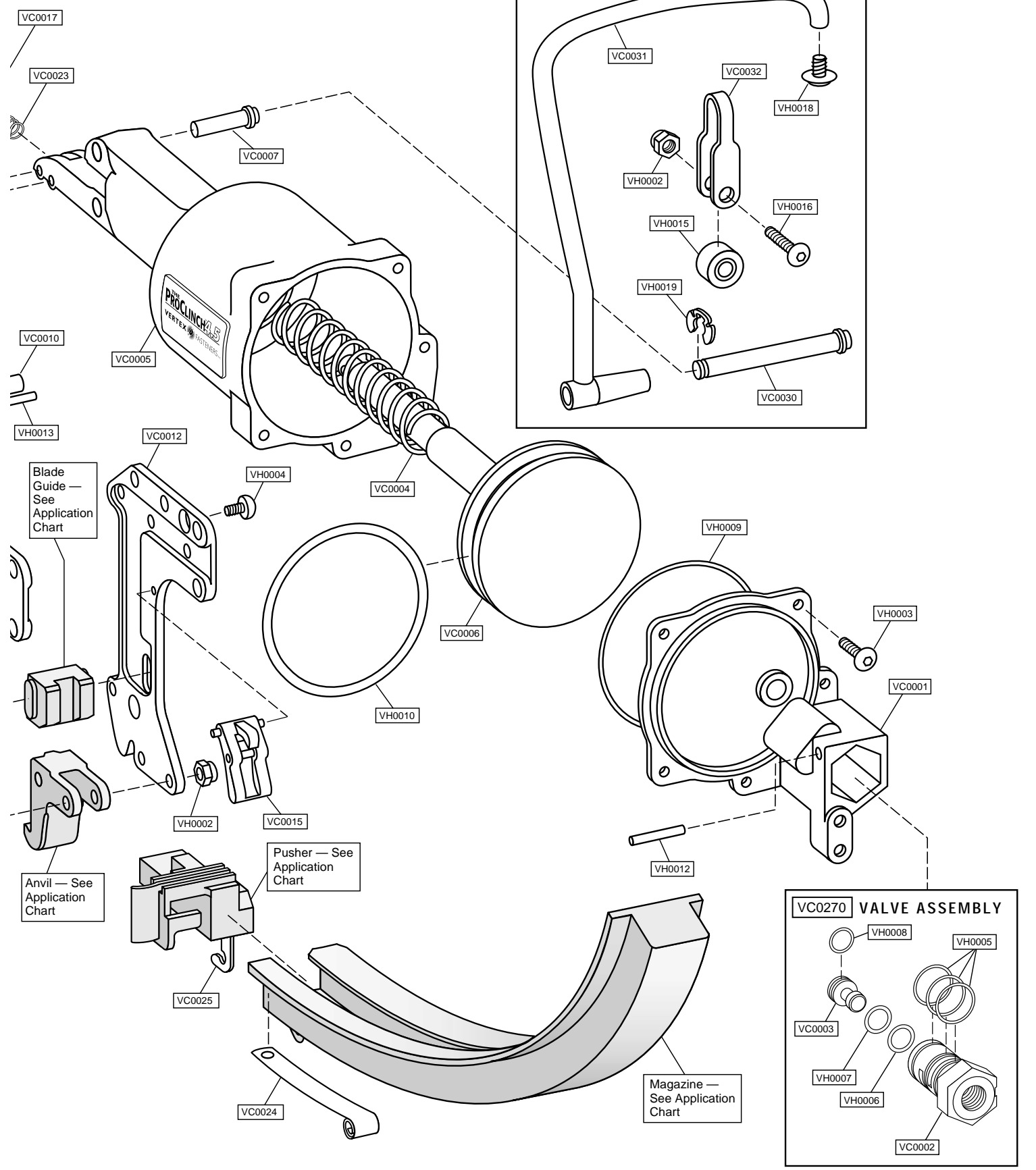
TROUBLESHOOTING INFORMATION

| PROBLEM | CAUSE | SOLUTION |
|------------------------|---|--|
| Blade does not return. | Sticky main valve. | Lubricate main valve; check that main valve piston moves. |
| Sluggish tool. | Dry main valve. | Lubricate main valve. |
| Clips not feeding. | Obstruction in magazine. Broken pusher spring. | Remove obstruction. Replace pusher spring. |
| Loose clips. | Low air pressure. Worn blade or anvil. | Increase pressure to 80 psi. Replace blade or anvil. |
| Clip jamming. | Clips are loaded backward into the magazine. | Check that single ear on clip is loaded forward into the magazine. |
| Tool not cycling. | Clogged trigger valve. | Clean trigger valve assembly. |

PARTS IDENTIFICATION

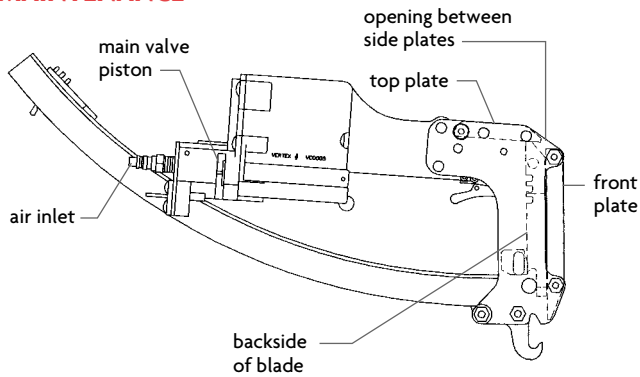


**RECOMMENDED
AIR SUPPLY: 80-90 PSI
(5.5–6.2 BARS) OF DRY,
LUBRICATED AIR**



PROCLINCH TOOL OPERATING INSTRUCTIONS

MAINTENANCE

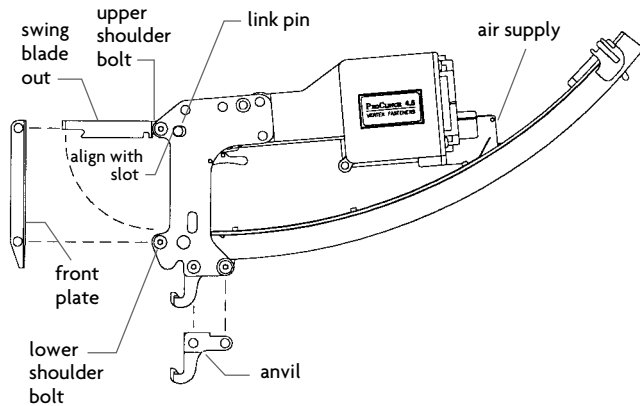


Recommended Daily Maintenance

Add 2-3 drops of oil (recommend 30 weight) to:

1. air inlet
2. main valve piston
3. opening between the side plates at these two locations:
 - between the front plate and top of blade
 - between the top plate and top of blade

BLADE AND ANVIL REPLACEMENT

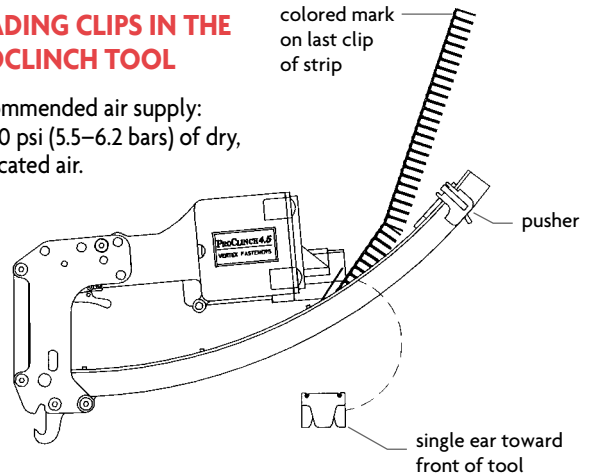


Blade Replacement

1. Disconnect air. Remove clips from tool.
2. Remove upper and lower shoulder bolts; remove front plate.
3. Swing blade from tool and align link pin with slot in side plates. Remove pin through slot and remove blade.
4. Lubricate new blade. Align mounting hole in links and blade with slot; assemble link pin through slot to secure blade and links.
5. Position blade into tool. Re-lubricate front plate and assemble back into tool with upper and lower shoulder bolts.

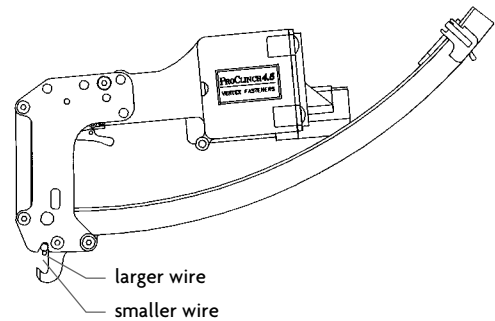
LOADING CLIPS IN THE PROCLINCH TOOL

Recommended air supply:
80-90 psi (5.5-6.2 bars) of dry,
lubricated air.



Loading Strips

1. Pull pusher back until it latches at end of magazine.
2. Remove strip of clips from box. Load to magazine with last clip toward back of tool (last clip is identified with a colored line).
3. Load entire strip into magazine. Push clips completely forward by unlatching pusher.

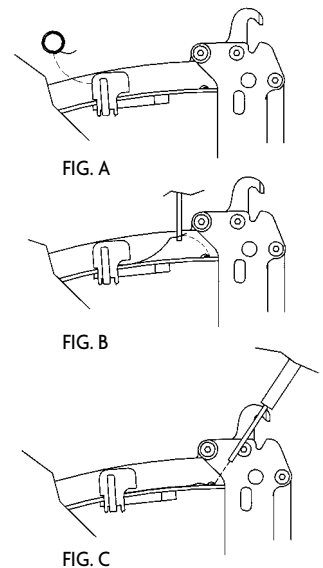


Loading Wires

For best results, smaller wire should be on bottom

PUSHER SPRING (VC0024) REPLACEMENT

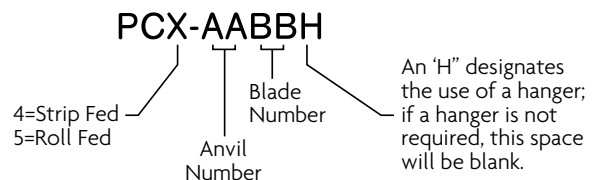
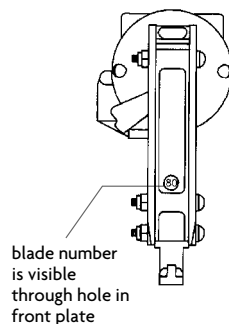
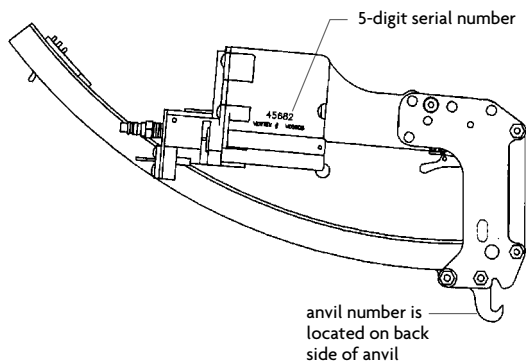
1. Remove damaged pusher spring from magazine.
2. Insert spring into pusher (Fig. A).
3. Pull out spring by inserting a pin or rod through hole in spring. Be careful not to deform spring (Fig. B).
4. Pull spring over mounting tab to secure in place (Fig. C). Pull pusher back and latch at end of magazine.



PROCLINCH CLIP APPLICATION GUIDE

| Vertex Clip Size | Replaces Clip Size | ProClinch Tool for Strips | Anvil #VC01__ | Blade #VC01__ | Blade Guide #VC006__ | Side Plates | Magazine Assembly & Pusher Assembly |
|------------------|--------------------|---------------------------|---------------|---------------|----------------------|--------------|-------------------------------------|
| 64A18S | CL-15 | PC4-1020 | 10 | 20 | VC0298 | VC0012 & 13 | VC0037 & VC0101 |
| 68H18S | CL-22 | PC4-6080 | 60 | 80 | 0 | VC0012 & 13 | VC0021 & VC0022 |
| 71A18S | CL-13, WD-3V | PC4-1020 | 10 | 20 | VC0298 | VC0012 & 13 | VC0037 & VC0101 |
| 72E18S | CL-20 | PC4-3236 | 32 | 36 | 8 | VC0012 & 13 | VC0021 & VC0022 |
| 74F18S | CL-73 | PC4-6080 | 60 | 80 | 0 | VC0012 & 13 | VC0021 & VC0022 |
| 74H18S | CL-23 | PC4-6080 | 60 | 80 | 0 | VC0012 & 13 | VC0021 & VC0022 |
| 76A18S | CL-26 | PC4-1020 | 10 | 20 | VC0298 | VC0012 & 13 | VC0037 & VC0101 |
| 76A22S | WD-2V | PC4-1022 | 10 | 22 | 1 | VC0012 & 13 | VC0037 & VC0101 |
| 80F18S | | PC4-6080 | 60 | 80 | 0 | VC0012 & 13 | VC0021 & VC0022 |
| 80H18S | CL-25 | PC4-6080 | 60 | 80 | 0 | VC0012 & 13 | VC0021 & VC0022 |
| 80F23S | CL-71, CL-312 | PC4-6181 | 61 | 81 | 0 | VC0012 & 13 | VC0021 & VC0022 |
| 80H23S | CL-3 | PC4-6181 | 61 | 81 | 0 | VC0012 & 13 | VC0021 & VC0022 |
| 85A18S | CL-30 | PC4-1020 | 10 | 20 | 1 | VC0012 & 13 | VC0037 & VC0101 |
| 85A22S | CL-33, WD-1V | PC4-1022 | 10 | 22 | 1 | VC0012 & 13 | VC0037 & VC0101 |
| 88A22S | CL-32, WD-OV | PC4-1022 | 10 | 22 | 1 | VC0012 & 13 | VC0037 & VC0101 |
| 88F23S | CL-72, CL-412 | PC4-6181 Furniture | 61 | 81 | 0 | VC0012 & 13 | VC0021 & VC0022 |
| 88F23S | CL-72, CL-412 | PC4-6185 Bedding | 61 | 85 | 0 | VC0012 & 13 | VC0021 & VC0022 |
| 88H23S | CL-4 | PC4-6181 Furniture | 61 | 81 | 0 | VC0012 & 13 | VC0021 & VC0022 |
| 88H23S | CL-4 | PC4-6185 Bedding | 61 | 85 | 0 | VC0012 & 13 | VC0021 & VC0022 |
| 90F18S | CL-24N, CL-74 | PC4-6082 | 60 | 82 | 3 | VC0012 & 13 | VC0021 & VC0022 |
| 90H17S | CL-24H | PC4-6082 | 60 | 82 | 3 | VC0012 & 13 | VC0021 & VC0022 |
| 90H18S | CL-24 | PC4-6082 | 60 | 82 | 3 | VC0012 & 13 | VC0021 & VC0022 |
| 91A23S | CL-14 | PC4-1121 | 11 | 21 | 1 | VC0012 & 13 | VC0037 & VC0101 |
| 91F23S | CL-72L | PC4-6185 | 61 | 85 | 0 | VC0012 & 13 | VC0021 & VC0022 |
| 95F23S | CL-75S | PC4-6185 | 61 | 85 | 0 | VC0012 & 13 | VC0021 & VC0022 |
| 96A23S | CL-9, WD-00V | PC4-1121 | 11 | 21 | 1 | VC0012 & 13 | VC0037 & VC0101 |
| 97F18S | | PC4-6082 | 60 | 82 | 3 | VC0012 & 13 | VC0021 & VC0022 |
| 97H18S | CL-24L | PC4-6082 | 60 | 82 | 3 | VC0012 & 13 | VC0021 & VC0022 |
| 101H22S | CL-5 | PC4-6183 | 61 | 83 | 3 | VC0012 & 13 | VC0021 & VC0022 |
| 101H23S | CL-34 | PC4-6183 | 61 | 83 | 3 | VC0012 & 13 | VC0021 & VC0022 |
| 102A25S | WD-000V | PC4-1125 | 11 | 25 | 1 | VC0012 & 13 | VC0037 & VC0101 |
| 109H22S | | PC4-6183 | 61 | 83 | 3 | VC0012 & 13 | VC0021 & VC0022 |
| 109H23S | | PC4-6183 | 61 | 83 | 3 | VC0012 & 13 | VC0021 & VC0022 |
| 110A18S | | PC4-1024 | 10 | 24 | 7 | VC0285 & 286 | VC0037 & VC0101 |
| 110H25S | CL-36 | PC4-6189 | 61 | 89 | 3 | VC0012 & 13 | VC0021 & VC0022 |
| 112D25S | CL-3610 | PC4-3135 | 31 | 35 | 2 | VC0012 & 13 | VC0021 & VC0022 |
| 116F33S | CL-77S | N/A | N/A | N/A | N/A | N/A | N/A & N/A |
| 120H23S | | PC4-6193 | 61 | 93 | 3 | VC0012 & 13 | VC0021 & VC0022 |
| 135H31S | CL-38 | PC4-6788 | 67 | 88 | 6 | VC0012 & 13 | VC0021 & VC0022 |
| N/A | | PC4-4157W | 41 | 57 | 4 | VC0012 & 13 | VC0021 & VC0022 |
| N/A | | PC4-6187W | 61 | 87 | 3 | VC0012 & 13 | VC0021 & VC0022 |

TOOL IDENTIFICATION

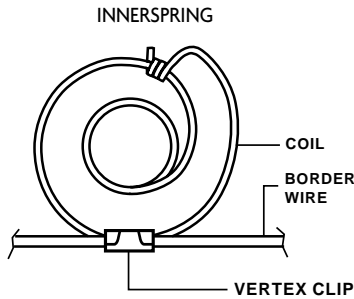


Example: Tool shown at left

PC4-6080
Serial Number: 45682

APPLICATIONS

CLIP GUIDE FOR BEDDING APPLICATIONS



Steel Wire Gage – U.S.

| Gage (Inches) | Coil Wire Diameter | | | | | | | | | | |
|--------------------------------------|--------------------|----------------|----------------|----------------|----------------|----------------|----------------|-------------------------|-------------------------|-------------------------|----------------|
| | 17 (.054) | 16-1/2 (.058) | 16 (.062) | 15-1/2 (.067) | 15 (.072) | 14-1/2 (.076) | 14 (.080) | 13-1/2 (.086) | 13 (.091) | 12-1/2 (.098) | |
| Border Wire Diameter – Gage (Inches) | 9 (.148) | 71A18 74F18 | 71A18 74F18 | 71A18 74F18 | 71A18 74F18 | 71A18 74F18 | 76A18 74F18 | 76A18 74F18 | 76A18 74F18 | 76A18 74F18 | 76A18 74F18 |
| | 8 (.162) | 71A18 74F18 | 71A18 74F18 | 71A18 74F18 | 76A18 74F18 | 76A18 74F18 | 76A18 74F18 | 76A18 80F18 80F23 | 76A18 80F18 80F23 | 76A18 80F18 80F23 | |
| | 6 (.192) | 85A22 80F23 | 85A22 80F23 | 85A22 80F23 | 85A22 80F23 | 85A22 80F23 | 85A22 88F23 | 85A22 88F23 | 88A22 88F23 | 88A22 88F23 | |
| | 5 (.207) | 88A22 88F23 | 88A22 88F23 | 88A22 88F23 | 88A22 88F23 | 88A22 88F23 | 96A23 91F23 | 96A23 91F23 | 96A23 91F23 | 96A23 95F23 | |
| | 4 (.225) | 96A23 91F23 | 96A23 91F23 | 96A23 91F23 | 96A23 91F23 | 96A23 91F23 | 96A23 95F23 | 96A23 95F23 | 96A23 95F23 | 96A23 95F23 | |
| | 3 (.244) | | | | | | | 102A25 | 102A25 | 102A25 | 102A25 |

Clip Widths: "A" Series = 7/16 inch (maximum value)

"F" Series = 3/4 inch (maximum strength)

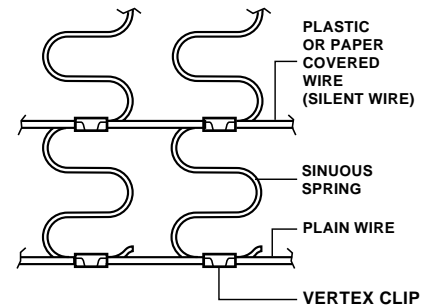
Metric

| Metric | Coil Wire Diameter | | | | | | | | | | |
|----------------------|--------------------|----------------|----------------|----------------|----------------|----------------|----------------|----------------|-------------------------|-------------------------|--|
| | 1.6mm | 1.7mm | 1.8mm | 1.9mm | 2.0mm | 2.1mm | 2.2mm | 2.3mm | 2.4mm | 2.5mm | |
| Border Wire Diameter | 4mm | 71A18 74F18 | 71A18 74F18 | 71A18 74F18 | 76A18 74F18 | 76A18 74F18 | 76A18 74F18 | 76A18 74F18 | 76A18 80F18 80F23 | 76A18 80F18 80F23 | |
| | 5mm | 85A22 80F23 | 85A22 80F23 | 85A22 80F23 | 85A22 88F23 | 88A22 88F23 | 88A22 88F23 | 88A22 88F23 | 88A22 88F23 | 88A22 91F23 | |

Clip Widths: "A" Series = 11.0 mm (maximum value)

"F" Series = 19.0 mm (maximum strength)

CLIP GUIDE FOR FURNITURE APPLICATIONS



Steel Wire Gage – U.S.

| Gage (Inches) | Sinuous Spring Wire Diameter | | | | | |
|-------------------------------|------------------------------|----------------|----------------|----------------|----------------------------------|----------------|
| | 12 (.106) | 11 (.121) | 10 (.135) | 9 (.148) | 8 (.162) | |
| Plastic or Paper Covered Wire | 16 (.156) | 74F18 80F23 | 74F18 80F23 | 74F18 80F23 | 74F18 80F23 | 74F18 80F23 |
| | 12 (.156) | 74F18 80F23 | 74F18 80F23 | 74F18 80F23 | 80F23 90F18 | 88F23 90F18 |
| Plain Wire | 9 (.148) | | | | 88F23 or 88H23 90F18 or 90H18 | |

Metric

| Wire Diameter | Sinuous Spring Wire Diameter | | | | | |
|---------------|------------------------------|----------------|----------------|----------------|----------------|----------------|
| | 3.86mm | 3.66mm | 3.25mm | 2.95mm | 2.65mm | |
| Silent Wire | 4.0mm | 80H18 80H23 | 80H18 80H23 | 80H18 80H23 | 80H18 80H23 | 80H18 80H23 |
| | 4.0mm | 90H18 88H23 | 90H18 88H23 | 90H18 88H23 | 90H18 88H23 | 90H18 88H23 |

NOTE: Please contact Vertex Fasteners prior to ordering for complete technical assistance.



A SUBSIDIARY OF *Leggett & Platt*

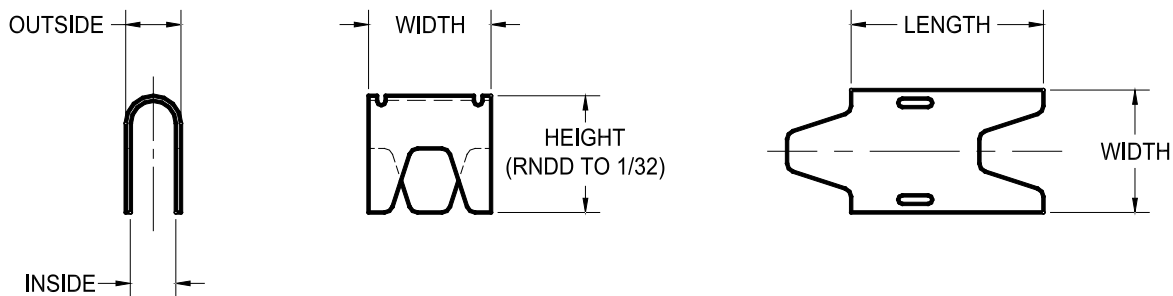
3714 JARVIS AVENUE, SKOKIE, IL 60076 USA EMAIL: VERTEX@LEGGETT.COM
PHONE: 847-329-8530 FAX: 847-329-8529

Clips covered by U.S. Patent No. 5,303,821
ProClinch covered by U.S. Patent No. 5,661,899

VERTEX FASTENERS

A DIVISION OF *Leggett & Platt*

3714 JARVIS AVENUE, SKOKIE, IL 60076 U.S.A. • FAX: 847-329-8529 • PHONE: 847-329-8530 • WWW.VERTEXFASTENERS.COM



| CLIP | LENGTH | | WIDTH | | HEIGHT | | INSIDE | | OUTSIDE | | CLIPS/ CTN | CLIPS/ ROLL | WT./CTN | | WT./ROLL | |
|----------|--------|-------|-------|-------|--------|-------|--------|------|---------|------|---------------|----------------|---------|-------|----------|-------|
| | IMP | MET | IMP | MET | IMP | MET | IMP | MET | IMP | MET | | | LBS | KG | LBS | KG |
| 52A14 | ,520 | 13,21 | ,430 | 10,92 | 5/16 | 7,94 | ,148 | 3,76 | ,206 | 5,23 | 15.080 | 15.000 | 27,67 | 12,55 | 27,53 | 12,49 |
| 52A14_G | ,520 | 13,21 | ,430 | 10,92 | 5/16 | 7,94 | ,142 | 3,61 | ,206 | 5,23 | 15.080 | 15.000 | 27,67 | 12,55 | 27,53 | 12,49 |
| 64A18_G | ,640 | 16,26 | ,430 | 10,92 | 13/32 | 10,32 | ,196 | 4,98 | ,260 | 6,60 | 10.340 | 15.000 | 25,77 | 11,69 | 37,38 | 16,96 |
| 68H17_LP | ,680 | 17,27 | ,860 | 21,84 | 7/16 | 11,11 | ,185 | 4,70 | ,260 | 6,60 | -- | 6.500 | -- | -- | 35,50 | 16,10 |
| 68H18 | ,686 | 17,42 | ,860 | 21,84 | 15/32 | 11,90 | ,196 | 4,98 | ,260 | 6,60 | 4.700 | 6.460 | 25,10 | 11,39 | 34,51 | 15,65 |
| 68H18_C | ,686 | 17,42 | ,860 | 21,84 | 15/32 | 11,90 | ,182 | 4,62 | ,260 | 6,60 | 4.700 | 6.460 | 25,10 | 11,39 | 34,51 | 15,65 |
| 71A18 | ,708 | 17,98 | ,430 | 10,92 | 7/16 | 11,11 | ,202 | 5,13 | ,260 | 6,60 | 9.400 | 13.025 | 23,49 | 10,66 | 32,54 | 14,76 |
| 72E18 | ,720 | 18,29 | ,670 | 17,02 | 15/32 | 11,90 | ,202 | 5,13 | ,260 | 6,60 | 6.110 | -- | 24,19 | 10,97 | -- | -- |
| 74F18R | ,736 | 18,69 | ,735 | 18,67 | 1/2 | 12,70 | ,196 | 4,98 | ,260 | 6,60 | -- | 7.710 | -- | -- | 37,77 | 17,13 |
| 74F18S | ,736 | 18,69 | ,735 | 18,67 | 1/2 | 12,70 | ,202 | 5,13 | ,260 | 6,60 | 5.076 | -- | 22,53 | 10,22 | -- | -- |
| 74F18_C | ,736 | 18,69 | ,735 | 18,67 | 1/2 | 12,70 | ,182 | 4,62 | ,260 | 6,60 | 5.076 | 7.710 | 24,87 | 11,28 | 37,77 | 17,13 |
| 74F18_L | ,736 | 18,69 | ,735 | 18,67 | 1/2 | 12,70 | ,188 | 4,78 | ,260 | 6,60 | 5.076 | 7.710 | 24,87 | 11,28 | 37,77 | 17,13 |
| 74H17_LP | ,740 | 18,80 | ,860 | 21,84 | 1/2 | 12,70 | ,173 | 4,39 | ,260 | 6,60 | 4.230 | 6.750 | 29,71 | 13,48 | 47,41 | 21,51 |
| 74H18R | ,740 | 18,80 | ,860 | 21,84 | 1/2 | 12,70 | ,196 | 4,98 | ,260 | 6,60 | -- | 6.750 | -- | -- | 38,90 | 17,65 |
| 74H18S | ,740 | 18,80 | ,860 | 21,84 | 1/2 | 12,70 | ,202 | 5,13 | ,260 | 6,60 | 4.230 | -- | 22,09 | 10,02 | -- | -- |
| 74H18_C | ,740 | 18,80 | ,860 | 21,84 | 1/2 | 12,70 | ,182 | 4,62 | ,260 | 6,60 | 4.230 | 6.750 | 24,38 | 11,06 | 38,90 | 17,65 |
| 74H18_G | ,740 | 18,80 | ,860 | 21,84 | 1/2 | 12,70 | ,196 | 4,98 | ,260 | 6,60 | 4.230 | 6.750 | 24,38 | 11,06 | 38,90 | 17,65 |
| 74H18_L | ,740 | 18,80 | ,860 | 21,84 | 1/2 | 12,70 | ,187 | 4,75 | ,260 | 6,60 | 4.230 | 3.750 | 24,38 | 11,06 | 38,90 | 17,65 |
| 76A18 | ,768 | 19,51 | ,430 | 10,92 | 1/2 | 12,70 | ,202 | 5,13 | ,260 | 6,60 | 8.460 | 13.025 | 22,92 | 10,40 | 35,30 | 16,01 |
| 76A22 | ,755 | 19,18 | ,430 | 10,92 | 1/2 | 12,70 | ,202 | 5,13 | ,260 | 6,60 | -- | 12.300 | -- | -- | 32,77 | 14,86 |
| 78F18 | ,780 | 19,81 | ,735 | 18,67 | 15/32 | 11,90 | ,196 | 4,98 | ,260 | 6,60 | 4.320 | -- | 22,43 | 10,17 | -- | -- |
| 78H17_LP | ,780 | 19,81 | ,860 | 21,84 | 17/32 | 13,49 | ,173 | 4,39 | ,260 | 6,60 | -- | 5.300 | -- | -- | 39,24 | 17,80 |
| 80F18_L | ,800 | 20,32 | ,735 | 18,67 | 17/32 | 13,49 | ,188 | 4,78 | ,260 | 6,60 | 5.076 | 7.710 | 27,03 | 12,26 | 41,06 | 18,62 |
| 80F23 | ,800 | 20,32 | ,735 | 18,67 | 1/2 | 12,70 | ,248 | 6,30 | ,306 | 7,77 | 4.320 | 6.667 | 20,85 | 9,46 | 32,17 | 14,59 |
| 80H18 | ,800 | 20,32 | ,860 | 21,84 | 17/32 | 13,49 | ,196 | 4,98 | ,260 | 6,60 | 4.230 | 6.800 | 26,36 | 11,96 | 42,37 | 19,22 |
| 80H18_LP | ,800 | 20,32 | ,860 | 21,84 | 17/32 | 13,49 | ,187 | 4,75 | ,260 | 6,60 | 4.230 | 6.800 | 26,36 | 11,96 | 42,37 | 19,22 |
| 80H23 | ,800 | 20,32 | ,860 | 21,84 | 1/2 | 12,70 | ,248 | 6,30 | ,306 | 7,77 | 3.600 | -- | 20,32 | 9,22 | -- | -- |
| 83H17_LP | ,830 | 21,08 | ,860 | 21,84 | 9/16 | 14,29 | ,182 | 4,62 | ,260 | 6,60 | -- | 5.000 | -- | -- | 39,39 | 17,87 |
| 83H18 | ,830 | 21,08 | ,860 | 21,84 | 9/16 | 14,29 | ,194 | 4,93 | ,260 | 6,60 | -- | 5.000 | -- | -- | 33,33 | 15,12 |
| 84F23 | ,840 | 21,34 | ,735 | 18,67 | 1/2 | 12,70 | ,242 | 6,15 | ,306 | 7,77 | -- | 6.500 | -- | -- | 36,34 | 16,48 |
| 85A18 | ,856 | 21,74 | ,430 | 10,92 | 9/16 | 14,29 | ,202 | 5,13 | ,260 | 6,60 | 7.520 | 11.771 | 22,72 | 10,31 | 35,56 | 16,13 |
| 85A22 | ,856 | 21,74 | ,430 | 10,92 | 17/32 | 13,49 | ,230 | 5,84 | ,288 | 7,32 | 6.720 | 12.300 | 20,30 | 9,21 | 37,16 | 16,86 |
| 85H17_LP | ,850 | 21,59 | ,860 | 21,84 | 19/32 | 15,08 | ,173 | 4,39 | ,260 | 6,60 | -- | 4.325 | -- | -- | 34,89 | 15,83 |
| 85H18_C | ,850 | 21,59 | ,860 | 21,84 | 9/16 | 14,29 | ,180 | 4,57 | ,260 | 6,60 | 3.290 | 4.325 | 22,46 | 10,19 | 29,35 | 13,31 |

| CLIP | LENGTH | | WIDTH | | HEIGHT | | INSIDE | | OUTSIDE | | CLIPS/ | CLIPS/ | WT./CTN | | WT./ROLL | |
|-------------|--------|-------|-------|-------|--------|-------|--------|------|---------|-------|--------|--------|---------|-------|----------|-------|
| | IMP | MET | IMP | MET | IMP | MET | IMP | MET | IMP | MET | CTN | ROLL | LBS | KG | LBS | KG |
| 87F18 | ,870 | 22,10 | ,735 | 18,67 | 9/16 | 14,29 | ,196 | 4,98 | ,260 | 6,60 | 4.512 | -- | 26,13 | 11,85 | -- | -- |
| 87F18_LP | ,870 | 22,10 | ,735 | 18,67 | 9/16 | 14,29 | ,187 | 4,75 | ,260 | 6,60 | 4.512 | -- | 26,13 | 11,85 | -- | -- |
| 87H17_LP | ,870 | 22,10 | ,860 | 21,84 | 19/32 | 15,08 | ,173 | 4,39 | ,260 | 6,60 | -- | 4.375 | -- | -- | 36,13 | 16,39 |
| 87H18 | ,870 | 22,10 | ,860 | 21,84 | 19/32 | 15,08 | ,194 | 4,93 | ,260 | 6,60 | 3.760 | 5.625 | 26,27 | 11,92 | 39,30 | 17,83 |
| 87H18_C | ,870 | 22,10 | ,860 | 21,84 | 19/32 | 15,08 | ,180 | 4,57 | ,260 | 6,60 | 3.760 | 5.625 | 26,27 | 11,92 | 39,30 | 17,83 |
| 87H18_L | ,870 | 22,10 | ,860 | 21,84 | 19/32 | 15,08 | ,186 | 4,72 | ,260 | 6,60 | 3.760 | 5.625 | 26,27 | 11,92 | 39,30 | 17,83 |
| 88A22 | ,881 | 22,38 | ,430 | 10,92 | 9/16 | 14,29 | ,230 | 5,84 | ,288 | 7,32 | 6.720 | 12.300 | 20,89 | 9,48 | 38,24 | 17,35 |
| 88A22_LP | ,881 | 22,38 | ,430 | 10,92 | 9/16 | 14,29 | ,213 | 5,41 | ,288 | 7,32 | 6.720 | 12.300 | 23,77 | 10,78 | 43,51 | 19,74 |
| 88A23 | ,874 | 22,20 | ,430 | 10,92 | 9/16 | 14,29 | ,248 | 6,30 | ,306 | 7,77 | 6.400 | 9.375 | 19,75 | 8,96 | 28,92 | 13,12 |
| 88F23 | ,880 | 22,35 | ,735 | 18,67 | 9/16 | 14,29 | ,248 | 6,30 | ,306 | 7,77 | 3.840 | 5.521 | 20,38 | 9,24 | 29,31 | 13,30 |
| 88F23_L | ,880 | 22,35 | ,735 | 18,67 | 9/16 | 14,29 | ,233 | 5,92 | ,306 | 7,77 | 3.840 | 5.521 | 22,49 | 10,20 | 32,34 | 14,67 |
| 88H23 | ,880 | 22,35 | ,860 | 21,84 | 9/16 | 14,29 | ,248 | 6,30 | ,306 | 7,77 | 3.200 | 3.850 | 19,88 | 9,02 | 23,91 | 10,85 |
| 88H23_AUTO | ,880 | 22,35 | ,860 | 21,84 | 9/16 | 14,29 | ,242 | 6,15 | ,306 | 7,77 | 3.200 | 3.850 | 21,93 | 9,95 | 26,39 | 11,97 |
| 88H23_C | ,880 | 22,35 | ,860 | 21,84 | 9/16 | 14,29 | ,228 | 5,79 | ,306 | 7,77 | 3.200 | 3.850 | 21,93 | 9,95 | 26,39 | 11,97 |
| 88H23_G | ,880 | 22,35 | ,860 | 21,84 | 9/16 | 14,29 | ,242 | 6,15 | ,306 | 7,77 | 3.200 | 3.850 | 21,93 | 9,95 | 26,39 | 11,97 |
| 90A29_G | ,900 | 22,86 | ,430 | 10,92 | 15/32 | 11,90 | ,302 | 7,67 | ,410 | 10,41 | -- | 8.800 | -- | -- | 52,04 | 23,61 |
| 90F18R | ,900 | 22,86 | ,735 | 18,67 | 5/8 | 15,88 | ,196 | 4,98 | ,260 | 6,60 | -- | 5.210 | -- | -- | 31,21 | 14,16 |
| 90F18S | ,900 | 22,86 | ,735 | 18,67 | 5/8 | 15,88 | ,202 | 5,13 | ,260 | 6,60 | 3.948 | -- | 21,43 | 9,72 | -- | -- |
| 90F18_G | ,900 | 22,86 | ,735 | 18,67 | 5/8 | 15,88 | ,196 | 4,98 | ,260 | 6,60 | 3.948 | 5.210 | 23,65 | 10,73 | 31,21 | 14,16 |
| 90H17 | ,900 | 22,86 | ,860 | 21,84 | 5/8 | 15,88 | ,186 | 4,72 | ,260 | 6,60 | 3.290 | 4.480 | 26,66 | 12,09 | 36,31 | 16,47 |
| 90H17_LP | ,900 | 22,86 | ,860 | 21,84 | 5/8 | 15,88 | ,177 | 4,50 | ,260 | 6,60 | 3.290 | 4.480 | 26,66 | 12,09 | 36,31 | 16,47 |
| 90H18 | ,900 | 22,86 | ,860 | 21,84 | 5/8 | 15,88 | ,196 | 4,98 | ,260 | 6,60 | 3.290 | 4.480 | 23,06 | 10,46 | 31,48 | 14,28 |
| 90H18_BP | ,900 | 22,86 | ,860 | 21,84 | 5/8 | 15,88 | ,198 | 5,03 | ,260 | 6,60 | 9.000 | -- | 61,11 | 27,72 | -- | -- |
| 90H18_C | ,900 | 22,86 | ,860 | 21,84 | 5/8 | 15,88 | ,180 | 4,57 | ,260 | 6,60 | 3.290 | 4.480 | 23,78 | 10,79 | 32,38 | 14,69 |
| 90H18_L | ,900 | 22,86 | ,860 | 21,84 | 5/8 | 15,88 | ,186 | 4,72 | ,260 | 6,60 | 3.290 | 4.480 | 23,78 | 10,79 | 32,38 | 14,69 |
| 95F23 | ,938 | 23,83 | ,735 | 18,67 | 21/32 | 16,67 | ,238 | 6,05 | ,306 | 7,77 | 3.360 | 4.375 | 22,29 | 10,11 | 29,02 | 13,16 |
| 95F23_C | ,938 | 23,83 | ,735 | 18,67 | 21/32 | 16,67 | ,224 | 5,69 | ,306 | 7,77 | 3.360 | 4.375 | 22,29 | 10,11 | 29,02 | 13,16 |
| 96A23 | ,960 | 24,38 | ,430 | 10,92 | 19/32 | 15,08 | ,234 | 5,94 | ,306 | 7,77 | 5.600 | 10.000 | 23,55 | 10,68 | 42,06 | 19,08 |
| 97H18 | ,970 | 24,64 | ,860 | 21,84 | 5/8 | 15,88 | ,194 | 4,93 | ,260 | 6,60 | 3.290 | 4.585 | 25,63 | 11,63 | 35,72 | 16,20 |
| 97H18_L | ,970 | 24,64 | ,860 | 21,84 | 5/8 | 15,88 | ,125 | 3,18 | ,260 | 6,60 | 3.290 | 4.585 | 25,63 | 11,63 | 35,72 | 16,20 |
| 98H22_P-BLK | ,980 | 24,89 | ,860 | 21,84 | 21/32 | 16,67 | ,226 | 5,74 | ,306 | 7,77 | 2.800 | 3.900 | 26,05 | 11,82 | 36,28 | 16,46 |
| 98H22_P-WHT | ,980 | 24,89 | ,860 | 21,84 | 21/32 | 16,67 | ,226 | 5,74 | ,306 | 7,77 | 2.800 | 3.900 | 26,05 | 11,82 | 36,28 | 16,46 |
| 101F23 | 1,010 | 25,65 | ,735 | 18,67 | 21/32 | 16,67 | ,238 | 6,05 | ,306 | 7,77 | 3.360 | 4.350 | 24,00 | 10,89 | 31,07 | 14,09 |
| 101F23_A | 1,010 | 25,65 | ,735 | 18,67 | 21/32 | 16,67 | ,238 | 6,05 | ,306 | 7,77 | 3.360 | -- | 10,65 | 4,83 | -- | -- |
| 101H22 | 1,010 | 25,65 | ,860 | 21,84 | 11/16 | 17,46 | ,230 | 5,84 | ,306 | 7,77 | 2.800 | 3.900 | 26,15 | 11,86 | 36,43 | 16,52 |
| 101H23 | 1,010 | 25,65 | ,860 | 21,84 | 11/16 | 16,67 | ,240 | 6,10 | ,306 | 7,77 | 2.800 | 3.900 | 22,71 | 10,30 | 31,64 | 14,35 |
| 101H23_C | 1,010 | 25,65 | ,860 | 21,84 | 11/16 | 17,46 | ,226 | 5,74 | ,306 | 7,77 | 2.800 | 3.900 | 22,71 | 10,30 | 31,64 | 14,35 |
| 101H23_L | 1,010 | 25,65 | ,860 | 21,84 | 11/16 | 17,46 | ,232 | 5,89 | ,306 | 7,77 | 2.800 | 3.900 | 22,71 | 10,30 | 31,64 | 14,35 |
| 102A25 | 1,020 | 25,91 | ,430 | 10,92 | 5/8 | 15,88 | ,246 | 6,25 | ,326 | 8,28 | -- | 9.375 | -- | -- | 43,06 | 19,53 |
| 109H22 | 1,090 | 27,69 | ,860 | 21,84 | 23/32 | 18,26 | ,228 | 5,79 | ,306 | 7,77 | 2.400 | 3.900 | 24,83 | 11,26 | 40,35 | 18,30 |
| 109H22_C | 1,090 | 27,69 | ,860 | 21,84 | 23/32 | 18,26 | ,216 | 5,49 | ,306 | 7,77 | 2.400 | 3.900 | 24,19 | 10,97 | 39,52 | 17,93 |
| 109H22_L | 1,090 | 27,69 | ,860 | 21,84 | 23/32 | 18,26 | ,218 | 5,54 | ,306 | 7,77 | 2.400 | 3.900 | 25,47 | 11,55 | 41,38 | 18,77 |
| 110A18 | 1,100 | 27,94 | ,430 | 10,92 | 21/32 | 16,67 | ,202 | 5,13 | ,260 | 6,60 | 6.580 | 9.300 | 25,54 | 11,58 | 36,10 | 16,37 |
| 110E25_S4 | 1,100 | 27,94 | ,670 | 17,02 | 23/32 | 18,26 | ,232 | 5,89 | ,326 | 8,28 | 1.443 | -- | 10,23 | 4,64 | -- | -- |
| 110H24 | 1,100 | 27,94 | ,860 | 21,84 | 23/32 | 18,26 | ,248 | 6,30 | ,326 | 8,28 | 2.220 | 3.750 | 23,18 | 10,51 | 39,15 | 17,76 |
| 110H25 | 1,100 | 27,94 | ,860 | 21,84 | 23/32 | 18,26 | ,252 | 6,40 | ,326 | 8,28 | 2.220 | 3.750 | 20,21 | 9,17 | 34,13 | 15,48 |
| 110H25_C | 1,100 | 27,94 | ,860 | 21,84 | 23/32 | 18,26 | ,238 | 6,05 | ,326 | 8,28 | 2.220 | 3.750 | 20,21 | 9,17 | 34,13 | 15,48 |
| 112D25 | 1,120 | 28,45 | ,620 | 15,75 | 23/32 | 18,26 | ,258 | 6,55 | ,326 | 8,28 | 3.108 | -- | 20,77 | 9,42 | -- | -- |
| 114D24 | 1,140 | 28,96 | ,620 | 15,75 | 3/4 | 19,05 | ,247 | 6,27 | ,326 | 8,28 | 3.108 | -- | 24,55 | 11,14 | -- | -- |
| 116F33 | 1,160 | 29,46 | ,735 | 18,67 | 11/16 | 17,46 | ,330 | 8,38 | ,398 | 10,11 | 2.160 | -- | 17,72 | 8,04 | -- | -- |
| 120H23_C | 1,200 | 30,48 | ,860 | 21,84 | 3/4 | 19,05 | ,224 | 5,69 | ,306 | 7,77 | 2.400 | -- | 23,83 | 10,81 | -- | -- |
| 125A38_G | 1,250 | 31,75 | ,430 | 10,92 | 11/16 | 17,46 | ,280 | 7,11 | ,480 | 12,19 | 3.000 | 5.100 | 27,38 | 12,42 | 46,55 | 21,12 |
| 125A38_S3 | 1,250 | 31,75 | ,430 | 10,92 | 11/16 | 17,46 | ,360 | 9,14 | ,480 | 12,19 | 3.000 | 5.100 | 27,38 | 12,42 | 46,55 | 21,12 |

| CLIP | LENGTH | | WIDTH | | HEIGHT | | INSIDE | | OUTSIDE | | CLIPS/ CTN | CLIPS/ ROLL | WT./CTN | | WT./ROLL | |
|---|--------|-------|-------|-------|--------|-------|--------|------|---------|-------|---------------|----------------|---------|-------|----------|-------|
| | IMP | MET | IMP | MET | IMP | MET | IMP | MET | IMP | MET | | | LBS | KG | LBS | KG |
| 132A38_G | 1,320 | 33,53 | ,430 | 10,92 | 3/4 | 19,05 | ,360 | 9,14 | ,480 | 12,19 | 3.000 | 5.100 | 28,91 | 13,11 | 49,15 | 22,29 |
| 132A38_S3 | 1,320 | 33,53 | ,430 | 10,92 | 3/4 | 19,05 | ,380 | 9,65 | ,500 | 12,70 | 3.000 | 5.100 | 29,22 | 13,25 | 49,67 | 22,53 |
| 132A38_S4 | 1,320 | 33,53 | ,430 | 10,92 | 3/4 | 19,05 | ,380 | 9,65 | ,500 | 12,70 | 3.000 | 5.100 | 28,91 | 13,11 | 49,15 | 22,29 |
| 135H30_C | 1,350 | 34,29 | ,860 | 21,84 | 13/16 | 20,64 | ,298 | 7,57 | ,388 | 9,86 | 1.550 | 2.350 | 19,35 | 8,78 | 29,34 | 13,31 |
| 135H31 | 1,350 | 34,29 | ,860 | 21,84 | 13/16 | 20,64 | ,316 | 8,03 | ,388 | 9,86 | 1.550 | 2.350 | 18,83 | 8,54 | 27,80 | 12,61 |
| Should you not see the clip you are looking for, please contact us. | | | | | | | | | | | | | | | | |